

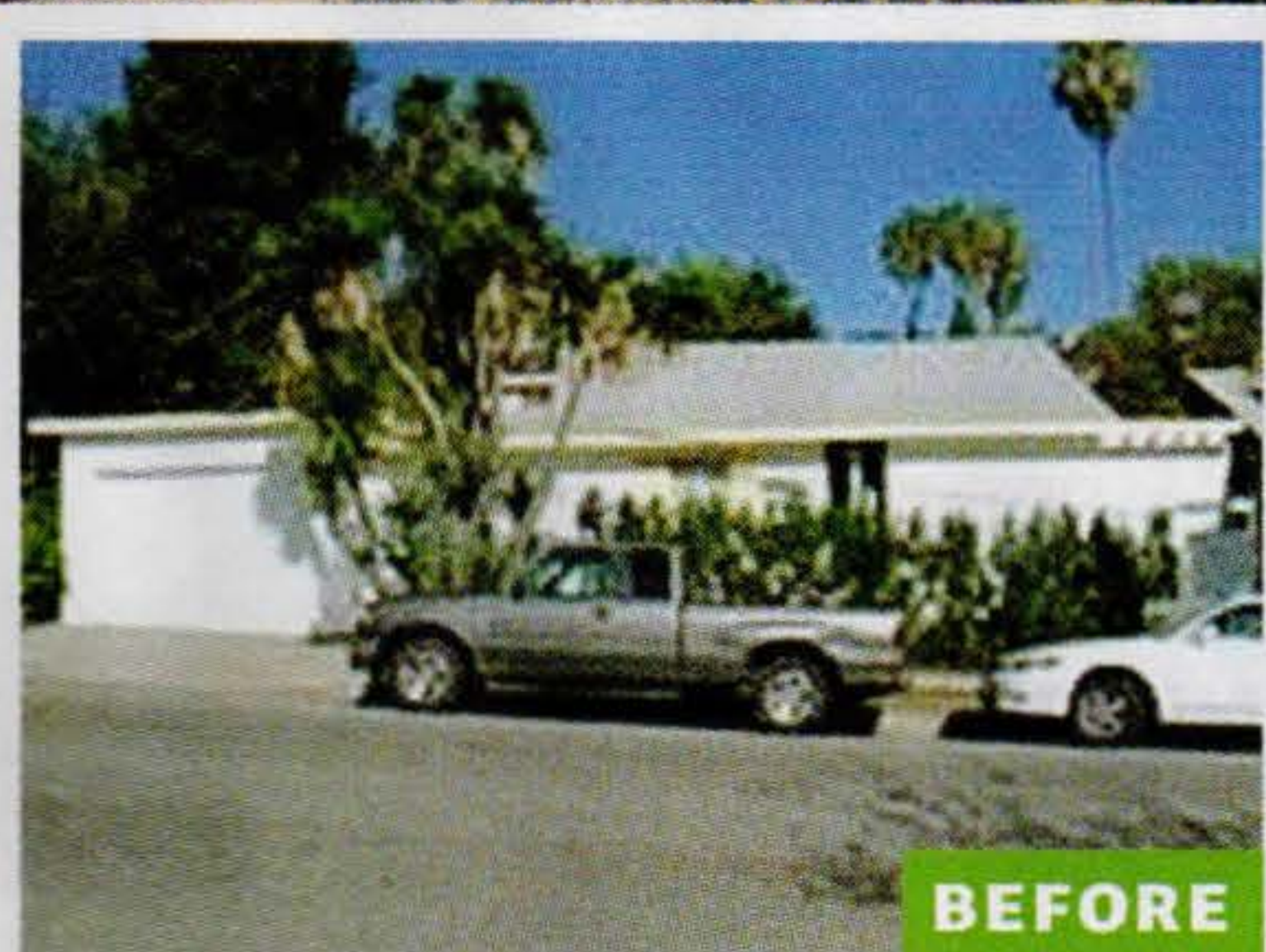
### RAISE THE ROOF

Because of building setback rules in West Hollywood, “we couldn’t go out any farther,” Mark says. “So we went up.”

# Micro Lodge

Urban yet woodsy grandeur in a mere 1,200 square feet

**WHEN MARK EGERSTROM** and Brian Grosdidier bought their 600-square-foot cottage on a tiny West Hollywood lot, years of neglect had stripped away all its original 1920s charm. “There were aluminum windows, torn-off siding... there was literally a crack pipe in the closet,” says Mark, an interior architect. “But it was an amazing location”—near the Pacific Design Center—“and a great deal.” Mark, who oversaw the two-year remodel, opened up the formerly choppy floor plan, adding glass walls, a loft room, and a roof deck “backyard” on top of it all. With its square footage doubled to a still-modest 1,200 square feet, the two-bedroom house now feels more like a hunting lodge than a cottage, thanks to the warm wood-and-neutrals palette and a few design tricks Mark had up his sleeve.



AFTER

**BORROW FROM  
OUTSIDE**

Glass walls seem to bring the plants into the room itself. It's a twist on the usual L.A. take on outdoor living: sliding doors opening onto patios. "We're tricking the eye into feeling there's more space than there is," says Mark. >52



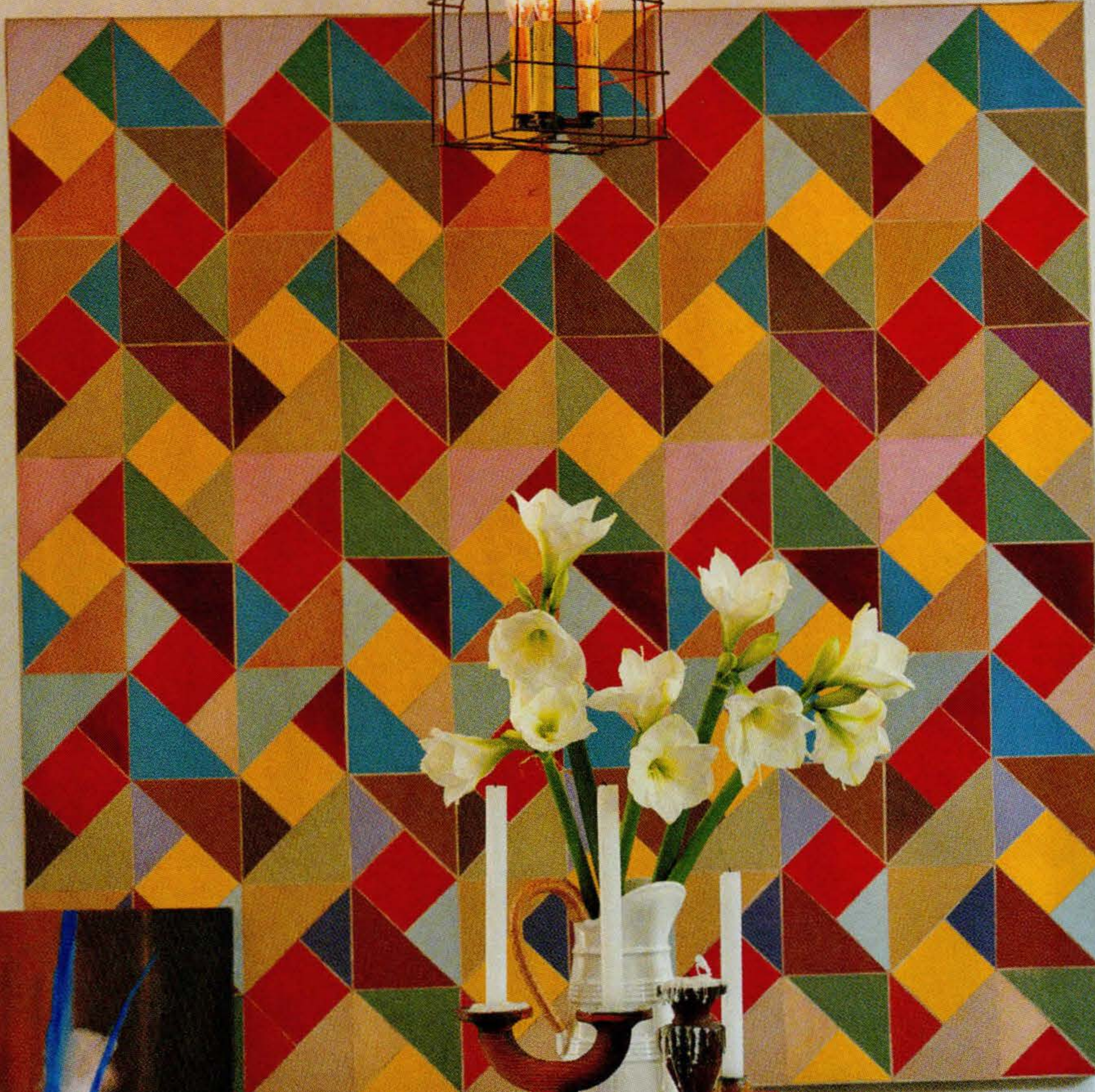
## Before & after

### DEFINE YOUR SPACES

A bright, geometric painting by Brian anchors the part of the great room that serves as the dining room. In a house this small, it gets plenty of use: Mark and Brian eat at the table nearly every night.



Recessed light boxes create the illusion of skylights.



Despite their dark color, a glass-topped table and spidery chairs keep the space light and airy.

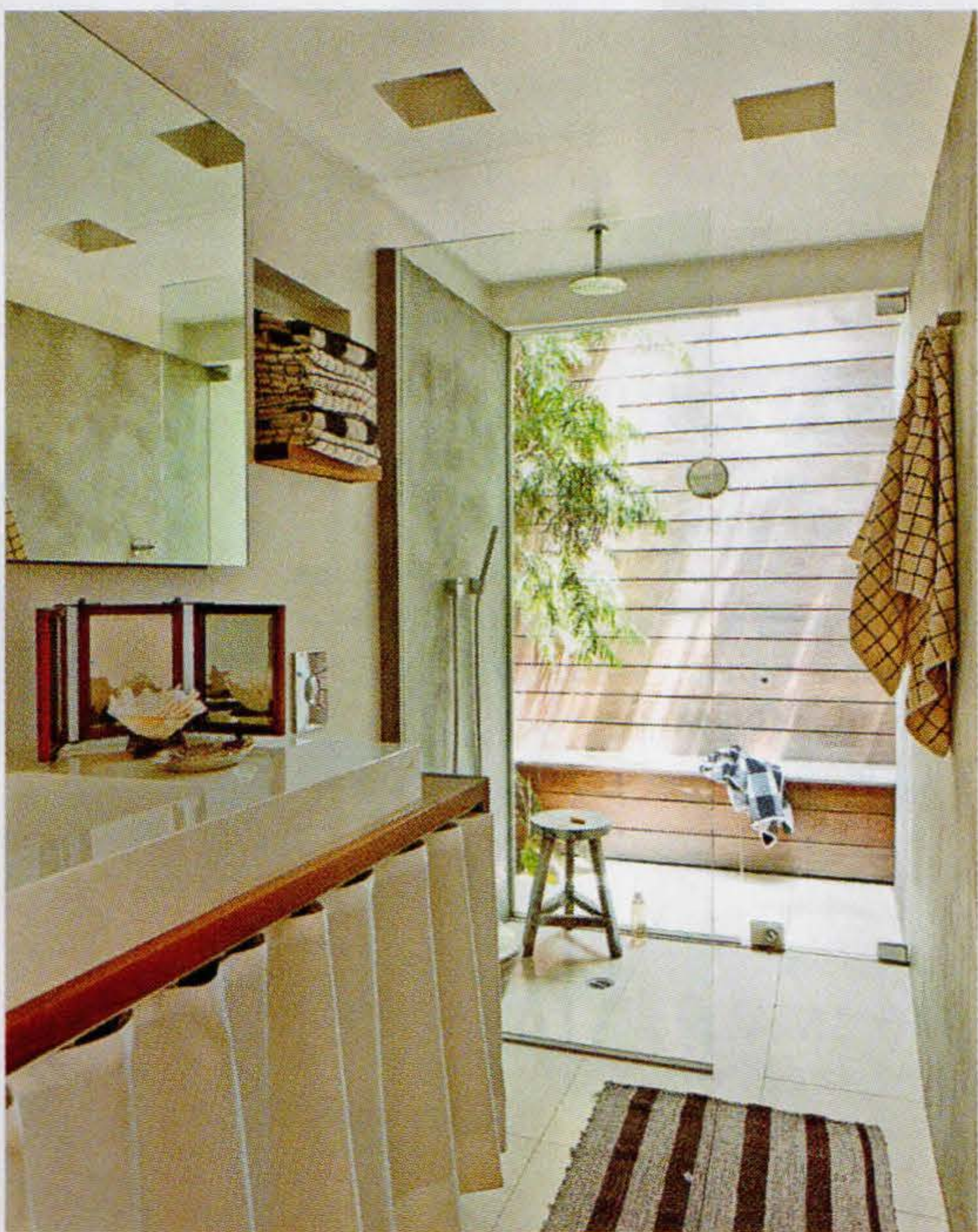


Mark covered the seats of these Paul McCobb chairs he found on [1stdibs.com](http://1stdibs.com) with Ralph Lauren fabric.





Buddy joins Brian and Mark outside.



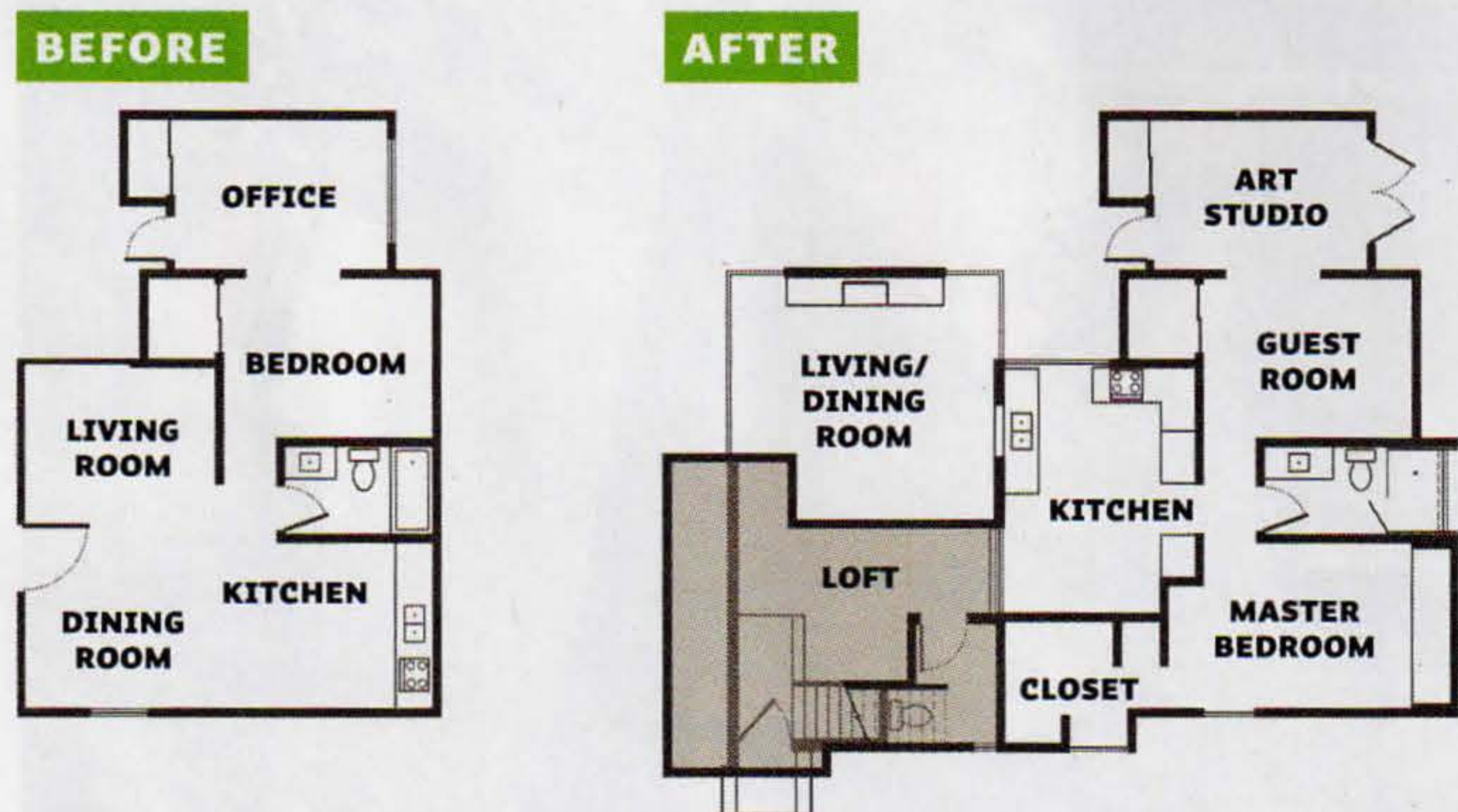
**THINK IN THREE DIMENSIONS**

In the living room, the ebony-stained cedar fireplace wall rises 20 feet to the ceiling. This view is looking down from Mark's loft office.

**USE YOUR LIGHT WELLS**

A door in the far shower wall leads to a small patio bounded by the wooden fence that surrounds the property. In addition to letting lots of natural light into the bathroom, the space is a great place to bathe Mark and Brian's dogs, Roxy and Buddy. >54

## THE FLOOR PLAN



## Mark's favorite resources

"Modern lodge is a good way to describe our style: a backdrop of warm neutrals with punches of bold color and organic wood texture. And the juxtaposition of old and new—the old things give a sense of history, while the more modern white and transparent pieces and pops of color make it feel fresh. It's masculine, but in a playful way. And it doesn't take itself too seriously.

"I love well-curated thrift stores,

where someone has actually put some thought into their pieces, but it's not super-expensive. Like **Jeff** (529 N. Fairfax Ave., Los Angeles; 323/653-5296), for barstools, outdoor furniture, Persian-style carpets, great filler pieces—all old-school over-the-top antiques. And I adore **Inheritance** (8055 Beverly Blvd., Los Angeles; [inheritanceshop.com](http://inheritanceshop.com)).

"I also go to **Wertz Brothers**, a permanent antiques mall in Santa Monica (1607 Lincoln Blvd.;

[wertzbrothers.com](http://wertzbrothers.com)); the **Santa Monica Airport Flea Market** ([santamonicaairportantiquemarket.com](http://santamonicaairportantiquemarket.com)); and the **Long Beach flea market**, at Veterans Stadium ([longbeachantiquemarket.com](http://longbeachantiquemarket.com)). I walk through real quick, take note of what grabs my eye, and check prices. Is it under \$100? What space or need will this fill? Each piece has a story. And that's what makes a house a home—its stories." ■

 **OTHER INSPIRING SMALL HOMES:** [sunset.com/smallhomes](http://sunset.com/smallhomes)



**PUT YOUR  
OUTDOOR SPACE  
UPSTAIRS**

“We’ve got a backyard—it’s just on the roof,” says Mark. “It feels like a treehouse up there above it all.”

